

TASKalfa MZ4000i: The future is here!

The TASKalfa MZ4000i is a truly reliable A3 monochrome MFPs for small to medium sized workgroups in any businesses or professional workplaces where high productivity, high reliability and optimal investments are required.



TASKalfa MZ4000i



Up to 40 pages per minute

Black and white printer

Standard 1,100-sheet capacity

Productive scanning features

Cloud compatibility



TASKalfa MZ4000i

GENERAL

Operation panel: 256.5 mm (10.1 inch) full-colour touch panel display, speaker for job notification, 15° - 90° swivel mounted

Engine speed: Up to 40 pages A4 per minute, up to 21 pages A3 per minute

Duplex print speed: 36 page per minute, A4

Duplex copy speed: 40 page per minute, A4

Resolution: 1200 x 1200 dpi (at reduced speed), 600 x 600 dpi (scan/copy)

Warm-up time: Approx. 18 seconds or less

Time to first print: Approx. 4.2 seconds or less

Time to first copy: Approx. 5.6 seconds or less (DP7140 installed), approx. 3.6 seconds or less (Platen)

CPU: PANTHER ARM A53 1.6GHz

Memory: Standard 4GB + 32GB SSD, 320GB or 1TB HDD optional

Standard interface: USB 3.0 (Super-Speed USB), 4 x USB Host Interface, Gigabit Ethernet (10BaseT/100BaseTX/1000BaseT, IPv6, IPv4, IPSec, 802.3az support), optional Wi-Fi (IEEE 802.11b/g/n), 2 eUIO slots for optional internal print server or for optional fax system, slot for optional Wireless LAN, Slot for optional SD Card, NFC tag

Dimensions (W x D x H): 594 x 696 x 683 mm

Weight: Approx. 58 kg

Power source: AC 220 ~ 240 V, 50/60 Hz

Power consumption: Printing: 600 W, copying: 600 W, low power mode: 70 W, ready mode: 100 W, sleep-mode: 0.5 W

Noise: Sleep mode: Immeasurably low, ready mode: Immeasurably low, printing: 48.7 dB (A) LpA

Safety standards: TÜV/GS, CE

PAPER HANDLING

All paper capacities quoted are based on paper thickness of max. 0.11 mm. Please use paper recommended by Kyocera under normal environmental conditions.

Input capacity: Multi-purpose tray: 100 sheets, 45 – 256 g/m² (A4/Letter or smaller), 52 – 163 g/m² (A4/Letter or larger), standard universal paper cassette: 2 x 500 sheet, 60 – 163 g/m², max. input capacity with options: 4,100 sheets A4

Duplex: Standard, 60 – 163 g/m² A3 – A5R

Output capacity: Standard 250 sheets face-down

PRINT FUNCTIONS

Controller language: Prescribe

Emulations: PCL6 (PCL5c / PCL-XL), KPDL3 (PostScript 3 compatible), PDF Direct Print, XPS Direct Print and OpenXPS

Operating systems: All current Windows operating systems, MAC OS X Version 10.9 or higher, Linux as well as other operating systems on request

Fonts/barcodes: 93 outline fonts (PCL), 136 fonts (KPDL 3), 4 fonts (Calibri), 4 fonts (Cambria), 1 Bitmap font, 45 types of one-dimensional barcodes, 1 type of two-dimensional barcode (PDF417)

Print features: Print features: Encrypted PDF Direct Print, IPP printing, e-mail printing, WSD print, secure printing via SSL, IPSec, SNMPv3, quick copy, proof and hold, private print, job storage and job management functionality

Mobile printing support: Mobile printing support: AirPrint, Mopria, Google Cloud Print compliant, NFC, Direct Wi-Fi (optional), MyPanel and KYOCERA Mobile Print app for iOS and Android

COPY FUNCTIONS

Max. original size: A3/Ledger

Continuous copying: 1 – 9999

Zoom range: 25–400%, in 1% steps

Preset magnification ratios: 5 Reductions / 5 enlargements

Exposure mode: Auto, manual: 17 steps

Image adjustments: Text + photo, photo, text, diagram/map

Features: Scan-once-copy-many, electronic sort, 2in1, 4in1, image repeat, page numbering, cover mode, booklet copy, interrupt copy, form overlay, margin shift, auto cassette change, skip blank page, ID copy, Original skew correction, Multipage form mode (when DP-7160/7170 installed only)

SCAN FUNCTIONS

Functionality: Scan-to-email, scan-to-FTP, scan-to-SMB 3.0, scan-to-USB host, scan-to-box, network TWAIN, WSD scan (WIA Driver Network)

Scan speed: 200 ipm (300 dpi, A4, duplex, b/w, with DP-7160/DP-7170)

Scan resolution: 600dpi x 600dpi, 400dpi x 400dpi, 200dpi x 400dpi, 300dpi x 300dpi, 200dpi x 200dpi, 200dpi x 100dpi, 1200dpi x 1200dpi (only TWAIN driver and WIA driver), 256 greyscales per colour

Max. scan size: A3, Ledger

Original recognition: Text, photo, text + photo, Light Text / Fine Line, optimised for OCR

File types: TIFF, PDF, PDF/A, JPEG, Open XPS, Encrypted PDF, High compression PDF, PDF/A-1a/b, PDF/A-2a/b/u, Searchable PDF(Optional), MS Office file (Option)

FAX FUNCTIONS

Compatibility: ITU -T Super G3

Modem speed: Max. 33.6 kbps

Transmission speed: Less than 3 seconds (JBIG)

Scanning speed: 2.0 seconds or less

Address book: 2000 entries

Scanning density: Normal: 8 dot/mm x 3.85 line/mm (200 x 100 dpi), Fine: 8 dot/mm x 7.7 line/mm (200 x 200 dpi), Superfine: 8 dot/mm x 15.4 line/mm (200 x 400 dpi), Ultrafine: 16 dot/mm x 15.4 line/mm (400 x 400 dpi), Halftone: 256 grey scales

Maximum original size: A3, Ledger, Banner: 1600mm

Compression method: JBIG, MMR, MR, MH

Features: Network faxing, rotate transmission, rotate reception, encrypted transmission and reception, duplex fax reception, memory reception, mailbox, remote diagnostics, polling transmission and reception, broadcast, Optional Internet-fax, dual fax with second fax system 12

CONSUMABLES

Toner Kit: TK-7235K, toner black for 35,000 pages A4

Staple: SH-10, 3 x 5,000 staples, for DF-7120, SH-12, 3 x 5,000 staples, for DF-791

Options: Fax System 12, Internet Fax Kit (A) AC, Scan Extension Kit (A) AC, Scan to searchable PDF solution (embedded OCR), convert to PDF or MS Office (docx, xlsx, pptx)

Paper handling:

DP-7140 Document processor: (Reversing), 50 sheets, 45–160 g/m² (simplex), 50–120 g/m² (duplex), A5R – A3, banner up to 1,900 mm

DP-7150 Document processor: (Reversing), 140 sheets, 35–160 g/m² (simplex), 50–120 g/m² (duplex), A6R–A3, Banner up to 1,900 mm

DP-7160 Document processor: (one-path duplex scanning), 320 sheets at 50 - 80 g/m², 35–220 g/m² (simplex), 50–220 g/m² (duplex), A6R–A3, Banner up to 1,900 mm

DP-7170 Document processor: (one-path duplex scanning with ultrasonic sensor), 320 sheets at 50 - 80 g/m², 35–220 g/m² (simplex), 50–220 g/m² (duplex), A6R–A3, Banner up to 1,900 mm

PF-791: 500 sheets x 2 desks, 60–256 g/m², A5R–A3

PF-810: 3,000 sheets A4, 60–256 g/m², A4, B5, Letter

DF-791 Document Finisher + AK740, Main tray: 3,000 sheets A4, 60–256 g/m², B5R–A3, Stapling up to 65 sheets A4 or 30 sheets A3 at 3 positions, B5–A3, *Bridge unit AK-740 required when using finisher

DF-7120 Document finisher + AK-740, 1,000 sheets A4 52–300 g/m², A6R–SRA3, Stapling up to 50 sheets A4 or 30 sheets A3 at 3 positions, *Bridge unit AK-740 required when using finisher

PH-7A/B/C/D for DF-791 and DF-7120, 2-hole/4-hole/Swedish type, 45–300 g/m², A5R–A3

MT-730(B) Mailbox sorter for DF-791, 7 bins x 100 sheets A4, 50 sheets A3/B4, 60–163 g/m²

Storage: HD-15: HDD 320 GB, HD-16: HDD 1 TB, NK-7120: Numeric keypad, Keyboard Holder 10, UG-33 AC: ThinPrint support, Emulation (IBM Proprinter/EPSON LQ-850/Diablo 630), USB IC Card Reader + Card Authentication Kit (B) AC Support for various authentication keys available. The card holder is standard.

Optional interface:

IB-37: Wireless Network Interface (USB : 5GHz/2.4GHz)

IB-38: Wireless Network Interface (USB : 2.4GHz)

IB-50: Gigabit-Ethernet board 10 BaseT/100 BaseTX/1,000 BaseT

IB-51: Wireless LAN Interface (802.11b/g/n)

Document Processing Options



DP-7170
Dual Scan Document Processor
320-sheet capacity
w/ multi-feed & staple detect
100 ipm simplex / 200 ipm duplex



DP-7160
Dual Scan Document Processor
320-sheet capacity
w/ multi-feed detection
100 ipm simplex / 200 ipm duplex



DP-7150
Reversing Auto
Document Processor
140-sheet capacity
80 ipm simplex / 48 ipm duplex



DP-7140
Reversing Auto
Document Processor
50-sheet capacity
50 ipm simplex / 16 ipm duplex

Document Finishing Options



PH-7A
2/3 Hole Punch Unit for
the DF-7120 Finisher
Resides in the Finisher



AK-740
Attachment Kit required
for both the DF-7120
and DF-791 Finishers



TASKalfa MZ4000i



DT-730 (B)
Original Holder
Optional platform that holds
originals prior to copying



NK-7120
Numeric Keypad
Provides additional hard
key option for the User Interface

DF-7120
1,000-sheet Finisher
Staples up to 50-sheets



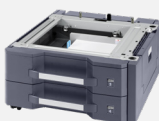
MT-730 (B)
7-Bin Mailbox Option
Installed on top of the
DF-791 Finisher
Holds 100-sheets/Bin



DF-791
3,000-sheet Finisher
Staples up to 65-sheets

PH-7A
2/3 Hole Punch Unit
for the DF-791 Finisher
Resides in the Finisher

Additional Paper Feeding Options



PF-791
Dual 500-sheet
Paper Tray Option
A5R—A3



PF-810
Dual 1,500-sheet
Paper Tray Option
A4, B5, Letter

IB-37
Wi-Fi 2.4 GHz/5GHz

HD-16
1 TB HDD option

HD-15 320 GB Option

FAX System I2

Internet FAX Kit (A)

Card Authentication
Kit (B)

IB-50 Gigabit Ethernet
Board for Dual NIC

IB-51 Wireless LAN NIC
(extended range)

PLATEN TYPE E

UG-33 Thin Print

UG-34 Optional Printer
Emulation

Scan Extension Kit (A)

Keyboard Holder 10

DT-730 (B) Original Hard
Copy Holder



The TASKalfa MZ4000i is a monochrome multifunctional product that is perfect for offices and workgroups with advanced functionality, usability and customisable solutions. TASKalfa MZ4000i provides high productivity and maximum flexibility, whilst ensuring minimum impact on the environment.

HyPAS™



Kyocera Document Solutions Partner

KYOCERA Document Solutions South Africa
90 Bekker Road, Hertford Office Park, Vorna Valley, Midrand
Tel (011) 595 2600
www.kyoceradocumentsolutions.co.za — info@dza.kyocera.com



kyoceradocumentsolutions.co.za

Kyocera Document Solutions does not warrant that any specifications mentioned will be error-free. Specifications are subject to change without notice. Information is correct at time of going to press.
All other brand and product names may be registered trademarks or trademarks of their respective holders and are hereby acknowledged.
©2022 KYOCERA Document Solutions South Africa